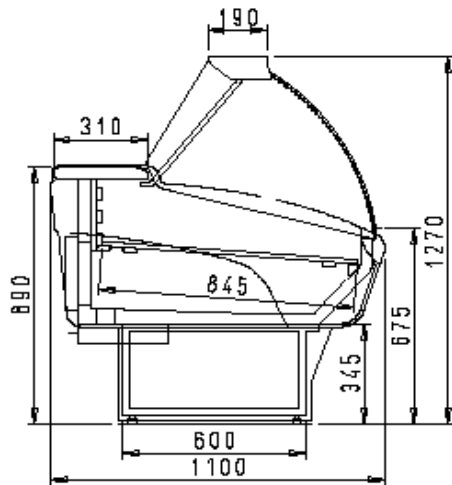




Commercial and Industrial Refrigeration

Astra Bread

ambient



The total amount includes:

- Lower plastified decorations trims - colours as per 'Akvatek Collection'
- POSTFORMING 250 mm, grey colour, anti-scratch working shelf
- Superstructure with curved glass, opening downward, with lighting and glass top service shelf
- Electric control panel
- Rear storage doors
- Stainless steel display trays
- Fan assisted refrigeration
- Refrigeration gas R404A
- Built-in condensing unit ***
- Manual condensation water tray
- Off-cycle defrost
- 2 grey thermoformed ends 40 mm./thick each
- Wooden crate packing










AKVATEK

15701 NW 15th Ave. Miami, FL 33169 Tel. 866-283-8766 Fax. 888-230-9388 www.abc-supermarket.com

DEALER NET PRICE

Length		code	TOTAL with ends	case without ends
with ends 40 mm	without ends			
1330	1250	9.62.00.60	\$ 3,110.36	\$ 2,470.46
1955	1875	9.62.00.65	\$ 3,618.05	\$ 2,978.15
2580	250	9.62.00.70	\$ 4,495.02	\$ 3,855.12
3205	3125	9.62.00.75	\$ 5,198.93	\$ 4,559.03

OPTIONAL COLORS

Yellow	RAL 1007		Gentian Blue	RAL 5010	
Yellow	RAL 1016		Yellow Green	RAL 6018	
Yellow	RAL 1021		Light Grey	RAL 7035	
Pure Orange	RAL 2004		Chocolate Brown	RAL 8017	
Light Ivory	RAL 1015		Grey White	RAL 9002	
ORANGE	RAL 202		White Aluminum	RAL 9006	
Ultramarine Blue	RAL 5002		May Green	RAL 6017	

AKVATEK

15701 NW 15th Ave. Miami, FL 33169 Tel. 866-283-8766 Fax. 888-230-9388 www.abc-supermarket.com